

RUTHMANNSTEIGER® - (R)Evolution of the „T“-Generation.

High performance, flexibility, safety, reliability and user-friendly handling – that are the criterions for you as a rental company of hydraulic aerial platforms to select your machines.

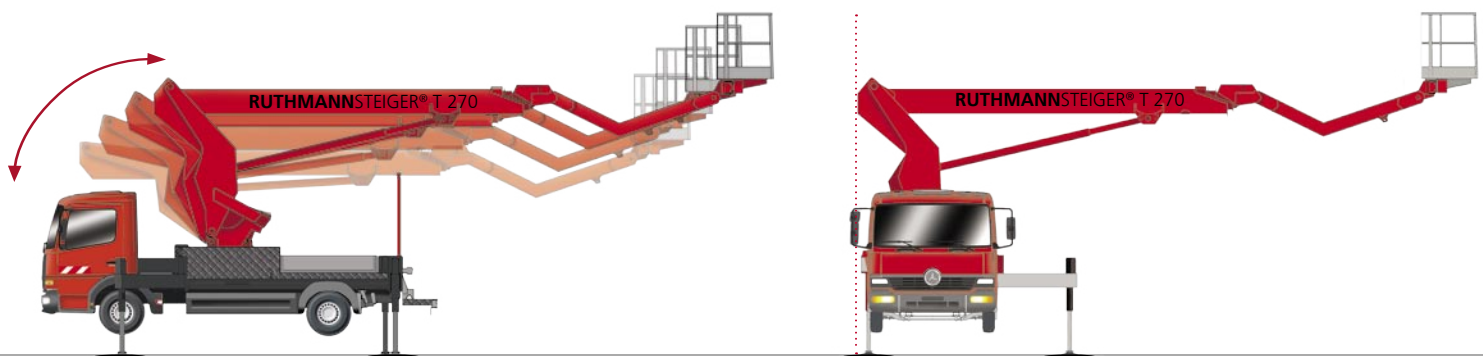
With the **RUTHMANNSTEIGER® T 270** you can use for these purposes the most up-to-date hydraulic aerial platform technology of the new T-series. The overall length of this machine is only approx. 7,40 m and also the wheelbase of 3,62 m is extremely short. This

extraordinary agility offers considerable advantages during operation in daily use also to you as a window and building cleaner, painter, horticulture company or contractor.

The innovative lifting technology of this machine appears in the VARIABLE TURRET: In basic position it uses the area above the driver's cab, during operation it remains inside the mirror width of the vehicle. Furthermore lifting of the variable turret makes it possible to easily bridge projections and

roofs at the places of operation. Thanks to the standard display with information and diagnosis system you receive all control information of the machine in the working cage.

With the **RUTHMANNSTEIGER® T 270** you can reach working heights of up to 26,40 m and take advantage of a large outreach of 20,40 m.



RUTHMANNSTEIGER® T 270

By means of the automatic positioning system delivered as standard outfit you can easily bring the machine into working position in no time. The automatic return to basic position - also delivered as standard outfit - enables you to also finish your operation just as quickly. At the touch of a button the STEIGER® automatically moves back into its transport position from each working spot.

The variable horizontal-vertical jacking (standard outfit) offers you a flexible and reliable protection even for hardly accessible working sites. For the use in narrow streets you can extend the stabilizing jacks e.g. only on one side of the vehicle. In case of extremely confined areas an extension of

the stabilizing jacks within the vehicle profile is possible.

With a carrying capacity of 320 kgs the working cage of 1,85 x 1,00 m brings you and/or your operating staff fast and safely to the desired working spot. Being mounted at the stern of the vehicle, you have comfortable access to the working cage and from there you navigate it directly to the desired position via the modern control panel offering four simultaneous movements.

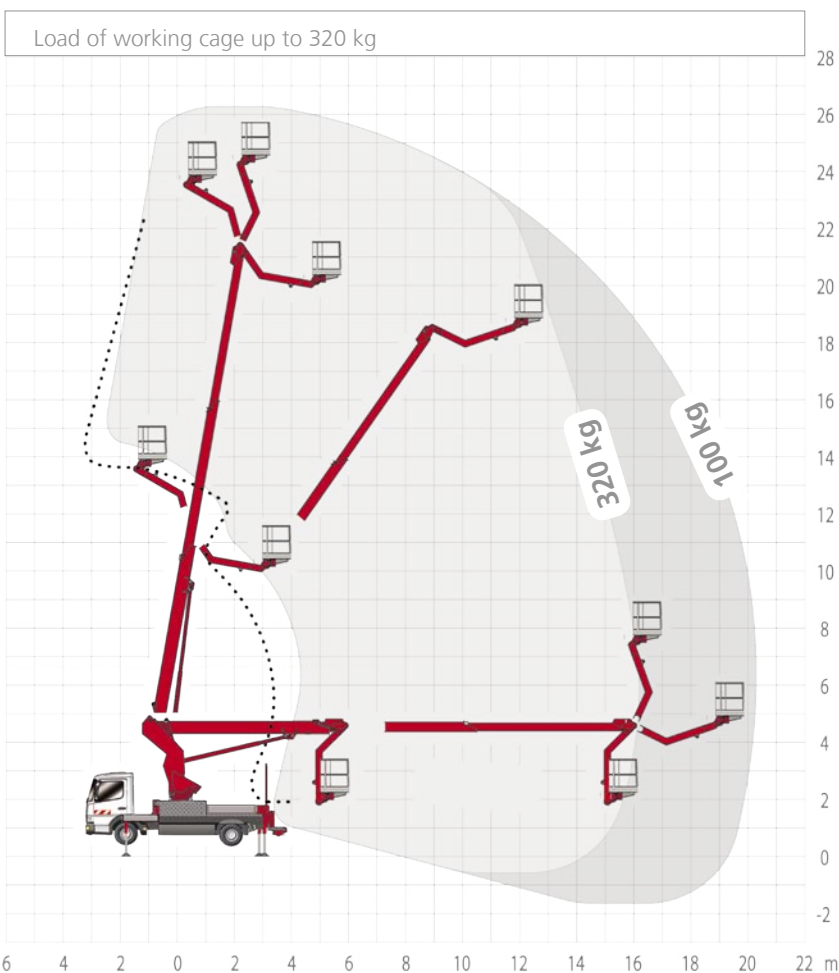
Contact us – by phone, fax or E-mail. We would be pleased to provide you detailed information about the performance spectrum of our proven STEIGER® and demonstrate profit and advantages for you.

RUTHMANNSTEIGER® T 270

Working height:	26,40 m
Lifting height:	24,40 m
Outreach:	20,40 m*
Range of rotation:	500°
Swivelling angle of articulated top boom Rüssel®:	195°
Size of working cage:	1,85 x 1,00 m
Carrying capacity of working cage:	320 kg
Telescopic extension:	10,00 m
Permissible siting inaccuracy:	up to 5°**
Total height:	3,40 - 3,50 m
Total length:	from 7,40 m
Perm. total weight:	from 7.490 kg
Wheelbase carrier chassis:	from 3.620 mm

* depending on load, angle of rotation and outfit

** with restriction of performance data



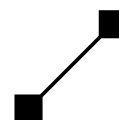
All dimensions in meters. All measurements and weights are approximate and refer to the standard basic execution. Technical alterations reserved. Steiger®, Gelenksteiger®, Hubsteiger® and Rüssel® are registered trademarks of Anton Ruthmann GmbH & Co. KG



Anton Ruthmann GmbH & Co. KG
P.O. Box 12 63
D-48705 Gescher-Hochmoor
GERMANY

Fon: +49 (0) 28 63/2 04-0
Fax: +49 (0) 28 63/2 04-2 12

Internet: www.ruthmann.de
E-mail: export@ruthmann.de



RUTHMANN
HIGHquality